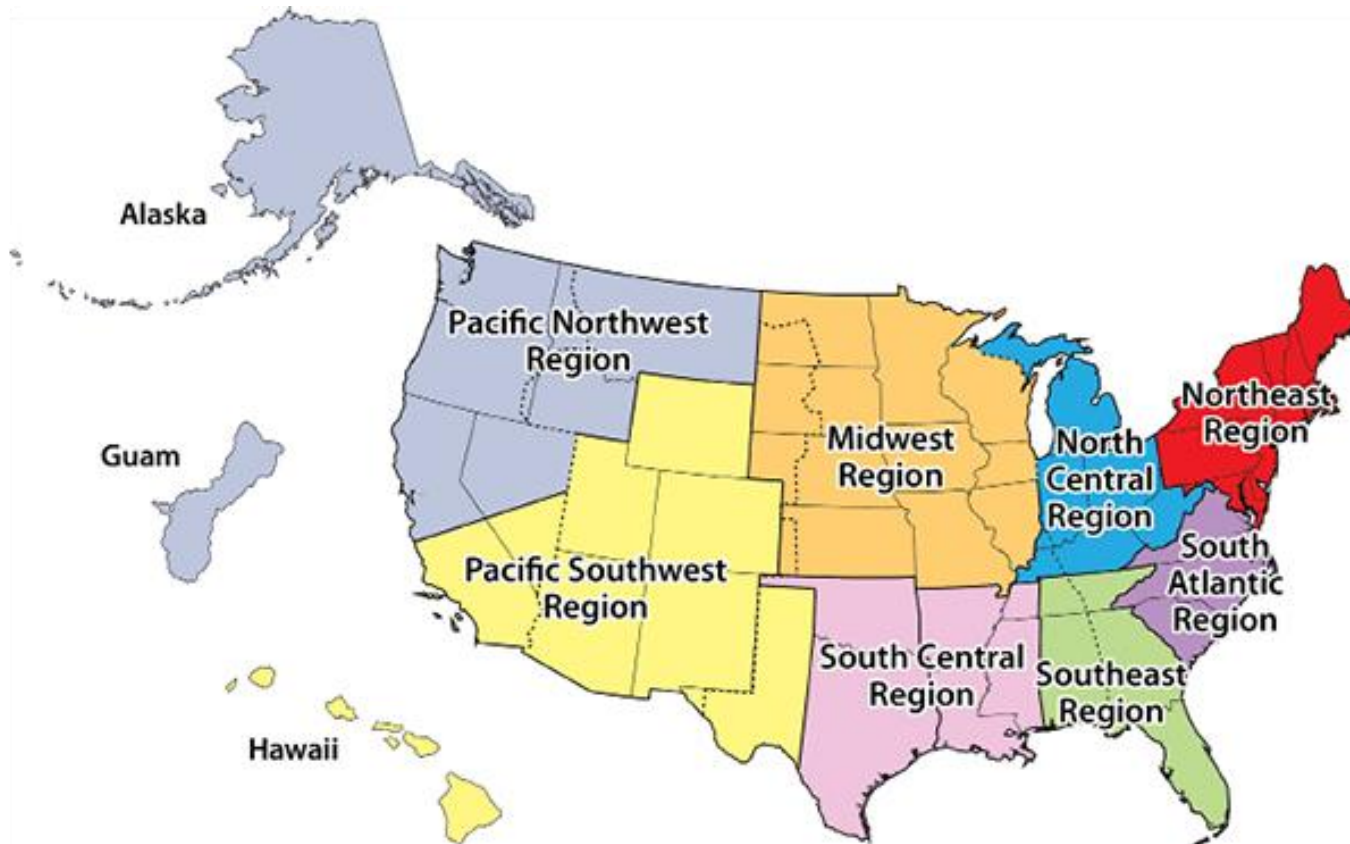

Leading Builders.
Building Leaders.



Organization

NAWIC USA has 8 Regions (117 chapters)



National History

Began as “Women in Construction”

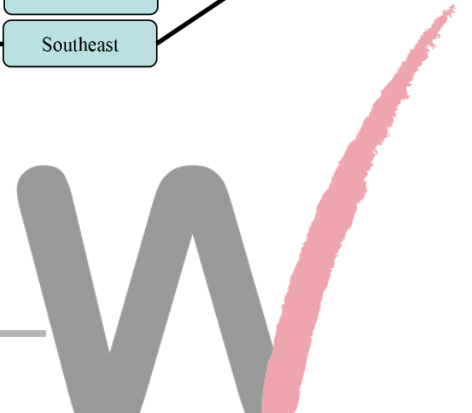
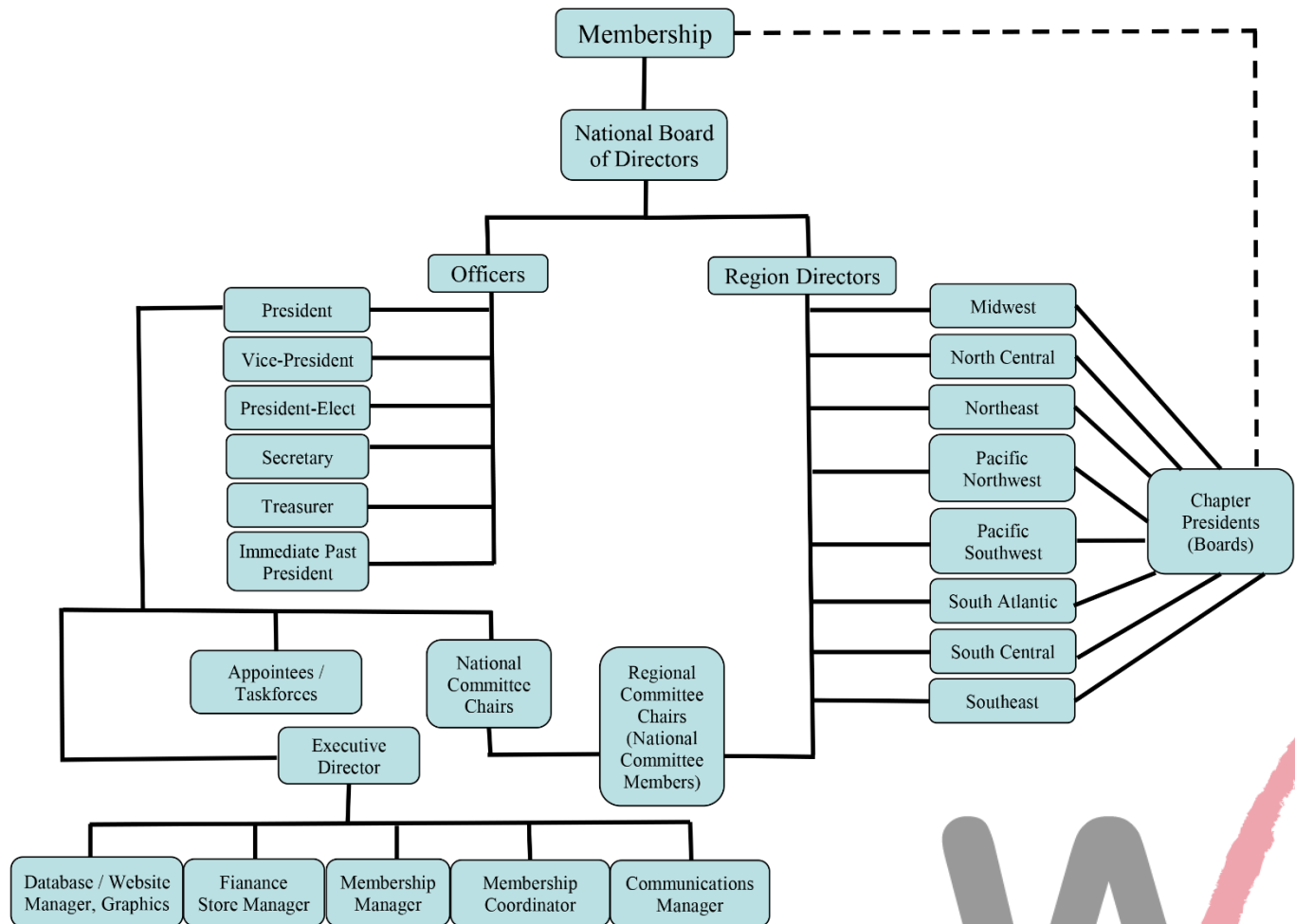
- In 1953 by 16 women in Fort Worth, TX
- Organized to create a support network
- Chartered in 1955 & became “National Association of Women in Construction”
- Today there are over 5200 members and 117 chapters nationwide

Since 1996 – International Growth

- NAWIC – Australia
- NAWIC – New Zealand
- NAWIC – South Africa
- NAWIC – United Kingdom
- NAWIC – Canada



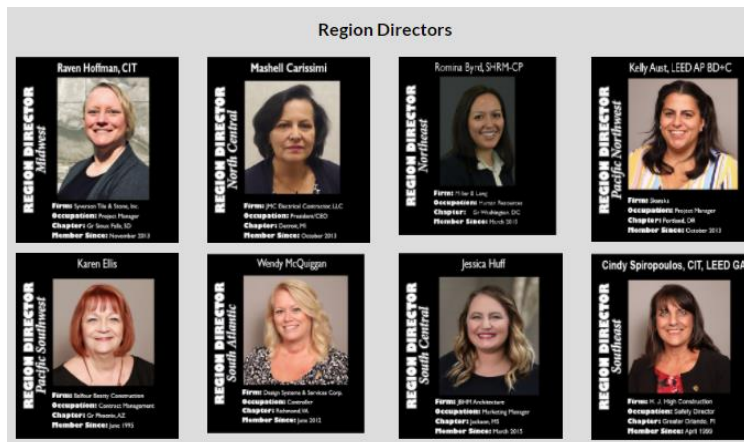
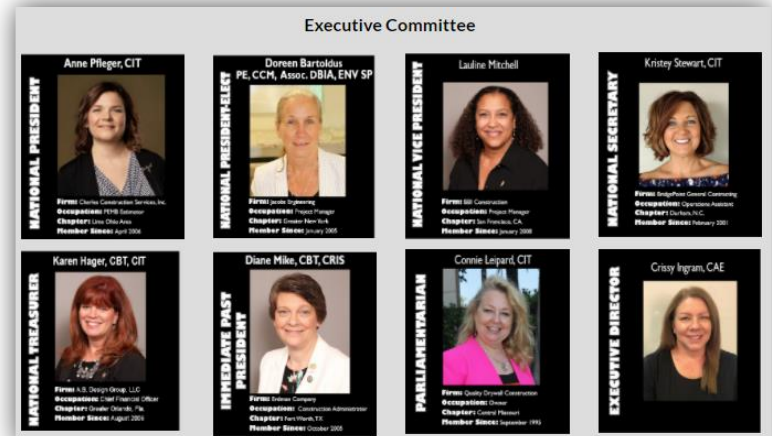
Organizational Chart



National Leadership

14-person Board of Directors

- President
- President-Elect
- Vice President
- Secretary
- Treasurer
- Immediate Past President
- 8 Regional Directors (2-year term)



Core Purpose: To strengthen and amplify the success of women in the construction industry.

Vision:

The Association committed to championing women to impact the direction of the Construction Industry

Core Values:

- Women-focused
- Courageous Leadership
- Commitment to inclusion and growth
- Anticipate Change



What does NAWIC “really” do?

Provide support and means needed (*for women in the construction industry*) to develop leadership skills through:

- Professional education & personal growth
- Becoming involved with the community
- Tremendous networking opportunities



Membership Categories

- Active
- Member-At-Large**
- Corporate
- Associate
- Retired
- Student Chapter
- Student- At-Large**

***Not affiliated with a chapter*



Why Become a NAWIC Member?

- Professional
- Business
- Educational Opportunities



Plus...

- Unique opportunity to increase our knowledge in the construction industry
- Share with other women involved in various phases of construction
- Encourage young people to seek a construction career



Professional Opportunities

The Professional benefits available through
NAWIC are **ENDLESS!**

- Industry Speakers
- Legislative/legal updates
- Career/job leads
- Mentoring Opportunities
- Education of youth and support through scholarships
- Connection with women in the industry
- Technical/product information
- Community outreach projects
- Liaison with other industry and professional associations

... and more!



Committee Engagement

- Emerging Professionals
- Marketing
- Membership
- OSHA Alliance
- Professional Development and Education
- Safety and Health Awareness
- Women in Construction (WIC) Week



OSHA Alliance

- Enables OSHA to develop voluntary, collaborative working relationships with organizations that are committed to workplace safety and health
- Provides proactive interaction between OSHA and other organizations
 - Trade, professional associations and labor unions
 - Companies and government agencies
 - Educational institutions
 - Community and faith-based groups
- OSHA works with Alliance participants to share information with workers and employers and educate workers and employers about their rights and responsibilities.



WIC Week: March 7-13, 2021

What is Women In Construction (WIC) Week?

- The focus of Women in Construction (WIC) Week is to highlight women across the country as a visible component of the construction industry.

What does WIC week do?

- Raises awareness of the opportunities available for women in the construction industry
- Emphasizes the growing role of women in the industry
- Gives back to their communities



Industry Councils

Join a council and become a change maker in our industry!

Share best practices
and peer to peer
learning!

Women Business Owner
Women of Color
Administrative / Finance
Human Resources / Legal

Management / Operations
Business Development / Sales / Marketing
Project Management / Safety

Tradeswomen

Technology

NAWIC Industry Councils give a safe space for
networking with other women in your field!



[Industry Councils - NAWIC](https://www.nawic.org)



Camp NAWIC



- Week-long day camp for Middle and/or High School girls
- Introduce them to a potential career in construction
- Educate girls that construction is NOT just for guys
- Real hands-on experience
 - Learn basic elements of construction trades
 - Team building / team approach
 - Demonstrate effective communication
- Develops greater self-confidence / self-esteem



Business Opportunities

There are profitable business opportunities through NAWIC

- Employee Recruitment
- Marketing/Advertising Opportunities for your company
- Leadership Skills
- Access to a national and local resource network
- Discounts on goods and services



Educational Opportunities

Education is highly valued within NAWIC.
Opportunities for your educational advancement
Include:

- Professional education programs
- Leadership development
- Assistance in planning career path
- Association magazine online subscription
- Speakers and seminars
- NAWIC Education Foundation (NEF) professional certifications



Conferences

- National: 66th Annual Conference
August 11-14, 2021 in Charlotte, NC
- Regional: Fall and Spring



NAWIC Education Foundation

- Adult Certifications:
 - Construction Bookkeeping Technician (CBT)
 - Construction Document Technician (CDT)
 - Construction Industry Specialist (CIS)
 - Construction Industry Technician (CIT)
 - Estimating and Scheduling Practitioner (ESP)



Employee's “Hidden” Benefits

- Membership enhances your career!
- Find out what's new and relevant in construction
- Access to others in the industry
- Business knowledge
- Public Speaking
- Leadership
- Learning from other professionals



2020 Member Awards

Future Leader

Dawn Brubaker
(Boise, ID Chapter #245)



Member of the Year

Leslie Westervelt, CBT
(Charlotte, NC Chapter #121)



Lifetime Achievement

Luci Roberts, CCA, CIT
(Austin, TX Chapter #7)



Established to recognize yearly the outstanding efforts of NAWIC Members.



Employer Benefits

- Developing and promoting industry values and culture
- Offering exposure to new skills and technology updates
- Promoting professional certifications, coaching and mentoring
- Industry Excellence Awards
- Generating publicity through community service projects
- Building a strong industry by promoting NEF (NAWIC Education Foundation) K-12 programs to the future workforce
- Participating and/or Sponsoring Camp NAWIC



2020 Industry Excellence Awards

Residential

Dorothy Day Community
Rehabilitation Project



www.bbiconstruction.com

Commercial

Justice Center – Tribal Court,
Peacemaking and Tribal
Police Project



www.d5m.net

Civil/Heavy Highway

C.C. Cragin Surface Water
Treatment Plant &
Hydroelectric Facility



<https://sunrise-eng.com>

Institutional

Roanoke City Hall



www.steelefreeman.com

Honors yearly best in class construction projects in four categories:
Civil/Heavy Highway, Commercial, Institutional and Residential.



Member / Company Services

Designed to provide members with discounts and special member rates

Service: Business

Consensus Docs

UPS Capital/Kabbage

UPS Shipping

UPS Freight Services

Career Center

Dovetail Workwear

XENA Workwear

Service: Education

Easybook Training

IRMI's Construction Risk Insurance Specialist Certification

Columbia Southern University

Lorman

Sensei Leader

Troy University

Service: Other

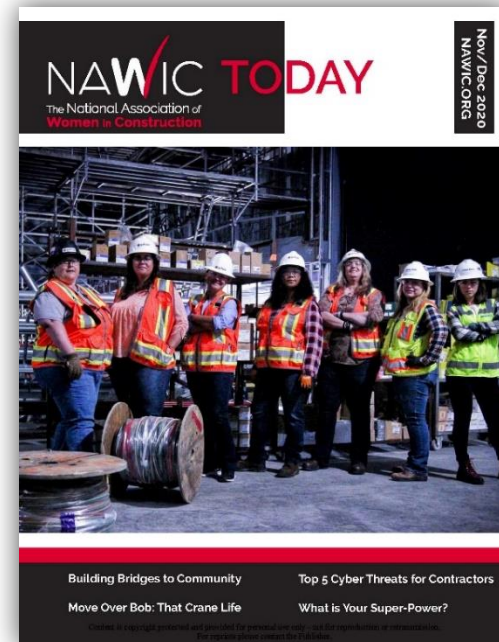
Cornerstone / Outfront Health Insurance

Rancho Mesa – Cyber Liability Program



Information Resources

- The NAWIC Today - National bi-monthly online publication
 - Showcases NAWIC members and their impact on the construction industry
- Newsletters
 - National – *“The Connection”*
 - Regional – *Director’s Newsletter*
 - Local – *Chapter newsletters*
- Online - www.nawic.org
 - Statistics on women in construction
 - Upcoming events
 - New member services
 - Association News
 - Career Center



Advertising

Digital Media Kit

<https://tinyurl.com/y4rqhx77>



Website Advertising

<https://tinyurl.com/yxegzpzt>



National Sponsorships

- Groundbreaker: \$25,000
- Builder: \$15,000
- Architect: \$10,000
- Director: \$7,500
- Contractor: \$5,000
- Consultant: \$2,000
- Craftsmen: \$1,000



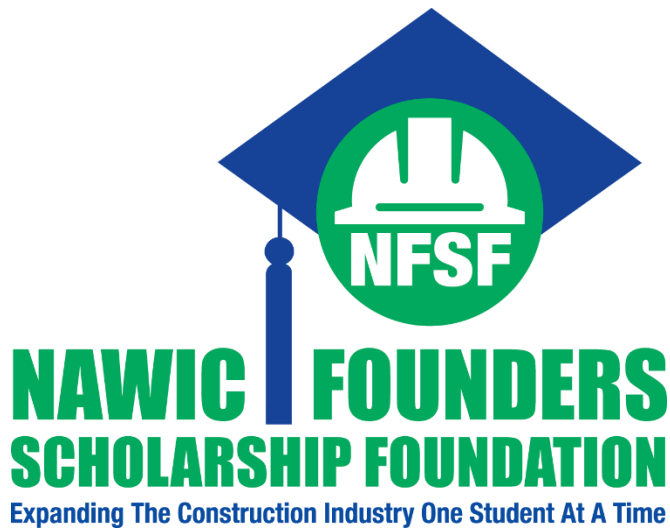
NAWIC Education Foundation

- NEF was established in 1972 by NAWIC as an IRS 501 (c)(3) non-profit organization and is governed by a Board of Trustees.
- NEF's core purpose to provide education opportunities and program to benefit and promote the construction industry, "Educating the construction industry today...and tomorrow."
- NEF is solely supported by sponsorships and donations. Your financial support educates others through various programs and construction industry education courses. Fundraising is also done by NEF Fundraising Liaisons at a regional and chapter level.
- NEF is recognized as a quality education provider by ACCE, American Council for Construction Education.



Scholarships

On the chapter and national level, a total of around \$100K is awarded each year to students pursuing construction-related degrees or construction trades apprenticeship training.



Chapter Specific

This slide is a placeholder for chapter specific events, initiatives, sponsorships etc. Chapters can add more slides if needed.

If not needed, please delete this slide before launching slide show.



Questions?

